



# News to Reuse

Addison County Solid Waste Management District

Winter 2022

## Textile Recycling: Now Available



The District Transfer Station is now accepting used clothing and textiles for special recycling. Households and businesses should drop off their used textiles in closed, plastic bags. Drop-off is free for households and businesses. Used Items MAY be ripped, dyed, or missing buttons and other hardware, as long as they are CLEAN, DRY, and ODORLESS. Any moldy, soiled, or damp textiles should be thrown away with regular trash.

A full list of guidelines is available on the A-Z Guide on our website.

## Acceptable items include:



Accessories



Clothing (all sizes)



Undergarments



Footwear (pairs only)



Stuffed toys



Sheets and linens

## Notice: Transfer Station Holiday Hours

The District Transfer Station will be closed on Saturday, December 24th for Christmas and Saturday, December 31st for New Years' Day.

## Reminder: Support for Events

The District supplies waste receptacles to events in the form of x-frames for recycling, trash, and food scraps, as well as food scrap buckets. These rentals are requested through a form on our website.

Additionally, we have "Zero Waste Event Kits" of reusable ceramic dishware, glasses, and silverware available upon request.



## Introducing Gabriella: Our ECO AmeriCorps Service Member!

We'd like to introduce Gabriella Stevens, who will be our new ECO AmeriCorps service member. Gabby is a graduate student at Pennsylvania State University studying Sustainability Management and Policy, and is thrilled to be hosted at the Addison County Solid Waste Management District. During her service year, Gabby would like to focus on programs which help to keep unwanted textiles out of landfills and promote accessible ways to cut down on waste.

After living in New York and North Georgia, Gabby is looking forward to being an active member of Addison County, and has already spent much of her free time exploring hiking trails and taking art classes in the area. You may also see her helping to lead some recycling and composting workshops. If you have any questions about how to minimize textile waste or about waste reduction in general, please reach out to Gabby at [gabriella@acswwmd.org](mailto:gabriella@acswwmd.org).

## Open Year-Round: HazWaste Center

Located at the District Transfer Station on Route 7 South in Middlebury, the HazWaste Center is open year round. Residents can drop off household hazardous waste free of charge without an appointment. Businesses must make an appointment and pay for hazardous waste disposal. The center is open Monday through Friday from 8 AM - 2 PM, and Saturday from 8:00 AM - 1 PM.



Throwing used needles in the trash or flushing them down the toilet poses a risk of injury or potential infection from diseases such as hepatitis B or C, tetanus, or HIV. Sharps (mainly used needles and lancets) are dangerous when they become loose in the trash. Every time a waste hauler, transfer station employee, or landfill attendant gets stuck with a needle, they need to get expensive medical tests and worry about whether they have caught a harmful or deadly disease. This is a real risk to people who work with waste. There are three rules to follow when disposing of household generated sharps:

1. **Don't throw loose needles in the trash.**
2. **Don't flush needles down the toilet.**
3. **Don't put needles in the recycling bin.**

Home generated sharps may be placed in your household trash under certain criteria. Call the District to get free stickers that identify sharps in the trash. These bright orange stickers help waste haulers quickly identify sharps so they can take extra precautions when handling them. Apply the sticker to an empty laundry detergent or softener bottle. Carefully place your needles and other sharps in bottle. When the bottle is full, screw on the cap, and seal the cap further with heavy tape (duct tape works well). Dispose of the full bottle in your household trash. Let your hauler know that sharps are present. **Do not recycle the sharps container.**



Sharps generated at medical or veterinary facilities, and injections administered by a health professional (as opposed to self-injections) inside your home, are regulated medical waste and may not be disposed of in the trash at any time.

## Are You a New Resident?

Welcome to Addison County!

- **How does waste disposal work here?**

If you live in a property you manage, either hire a hauler or utilize a town drop-off. If you live in a rental property, contact your landlord.

- **Do I have to compost?**

Food scraps are banned from trash disposal under Vermont law; however, this does not mandate composting. The options for food scrap diversion are: backyard composting, feeding scraps to chickens or pigs, using a hauler for curbside pick-up, or going to a town drop-off.

- **Do I have to sort my recycling?**

Recycling here is single stream, meaning it all goes in one blue bin. Our materials recovery facilities (MRFs) use machines and humans to sort material by type. There is no need to sort yourself.

- **What is a disposal ban?**

Vermont passed the Universal Recycling law in 2012 to focus on diverting waste from the landfill. This mandates that certain wastes like food residuals and some recyclables be redefined as resources and thus be kept away from trash bins.

- **I need help! Where does this item go?**

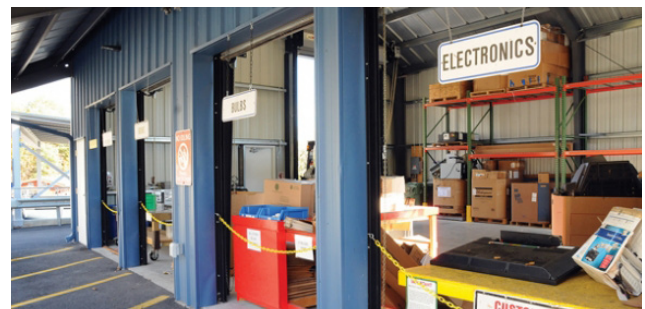
Our A-Z guide details how to dispose of most items. Grouped by category, this alphabetical list will tell you if an object should go in the trash, recycling, compost, or elsewhere.

- **List of Licensed Haulers:**

Looking for curbside pickup of waste from a hauler? We keep a list of licensed commercial haulers in Addison County on our website.

- **District Website:**

Visit our website for more information:  
[www.addisoncountycycles.org](http://www.addisoncountycycles.org)



Above: The Drop Zone at the District Transfer Station accepts myriad materials for special recycling.

# Mercury-containing Lightbulbs Banned from Sale in Vermont

The state of Vermont announced upcoming bans on the sale of two types of mercury-containing lightbulbs.

Screw-based Compact Fluorescent Lightbulbs (CFLs) will be banned from sale starting **Feb. 17, 2023** and Four-foot General-Purpose Linear Fluorescent Tubes will be banned from sale starting on **January 1, 2024**



## Why does this ban exist?

Mercury is a highly toxic heavy metal. In fluorescent bulbs, mercury can release as a gas when the bulb breaks or is discarded. Mercury contamination harms our environment, fish and wildlife. Disposal bans were adopted to keep mercury from entering the environment. Energy-efficient alternatives to mercury-containing lightbulbs are widely available in the form of LED bulbs.

**Hg** Look for the mercury symbol



Person changing their fixture from an energy-inefficient bulb to an LED

## What are the next steps?

There are already existing alternatives for screw-based compact fluorescent lightbulbs in the form of screw-based LED bulbs.

For linear tube replacement, there are TLED (tubular LED) replacement bulbs and LED retrofit kits to replace bulbs and other components. If the fixture is not compatible with these replacement bulbs or with a retrofit kit, the luminaire will need to be replaced.

## How do you get rid of these bulbs?



### Package properly

Please do not tape bulbs together. Try to package bulbs loose to prevent breakage during transport. Call the District if you need help with packaging.



### Bring to a collection site

At the District Transfer Station: CFLs are free, other bulbs free if in quantities of 10 or fewer per day. To find another collection site, visit: [lamprecycle.org](http://lamprecycle.org).

## What if a bulb breaks?

**If it breaks on a hard surface:** Ventilate the area by closing interior doors and vents and opening windows. Do not vacuum a hard surface. Leave the room for at least 15 minutes. Remove all materials you can, wear disposable gloves, and carefully scoop the glass fragments and dust with a stiff piece of paper or cardboard. Use sticky tape to collect smaller pieces. Wipe the area clean with a damp paper towel or wet wipe. Place all cleanup materials in plastic bags or a sealable rigid container. Store this in an area inaccessible to children. Wash your hands. Bring the sealed container to the HazWaste Center.

**If it breaks on a rug:** Remove the rug if possible and air it outside. The first time you vacuum the room, ventilate it and remove the vacuum bag. Clean the vacuum and dispose of all cleanup materials as described above.

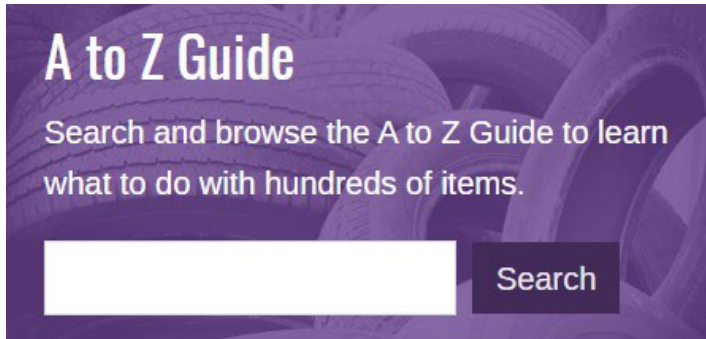
Contact the Vermont Department of Environmental Conservation; Mercury Education & Reduction Program for more information. [www.mercvt.org](http://www.mercvt.org) or (802) 522-5736

# What is the Addison County Solid Waste Management District?

ACSWMD is a union municipal District that exists to cooperatively and comprehensively address the materials management interests of our 21 member towns: Addison, Bridport, Bristol, Cornwall, Ferrisburgh, Goshen, Leicester, Lincoln, Middlebury, Monkton, New Haven, Orwell, Panton, Ripton, Salisbury, Shoreham, Starksboro, Vergennes, Waltham, Weybridge, and Whiting. The District promotes waste reduction; maximizes diversion of materials through reuse, recycling, and composting; and provides for the disposal of remaining wastes.

District services include: use of the District Transfer Station in Middlebury (including the HazWaste Center); solid waste planning and management; public outreach; education programs, including school workshops and events; technical support and advocacy on waste-related issues; and enforcement against illegal burning and dumping.

Our website is a robust resource, and the A to Z Guide can tell you how to get rid of almost anything! If you can't find the info you need on our website, give us a call.



**A to Z Guide**  
Search and browse the A to Z Guide to learn what to do with hundreds of items.

# District Transfer Station

Location: 1223 Route 7 South, Middlebury  
Hours: Mon-Fri: 7 AM - 3 PM, Sat: 8 AM - 1 PM

The **HazWaste Center** at the Transfer Station is open Monday through Friday, 8 AM - 2 PM & Saturdays, 8 AM - 1 PM. Business hazardous waste is received by appointment only.

**We cannot accept household recyclables or small amounts of bagged trash from residents.** Please call us for a list of town drop-off locations, or licensed haulers for curbside collection and cleanouts. The Transfer Station accepts many other special recycling items. Visit [www.AddisonCountyRecycles.org](http://www.AddisonCountyRecycles.org) for more information.

**Recycling of the following landfill-banned items is mandatory for residents and businesses in the District:** Newspaper, cardboard, boxboard, white & mixed paper, magazines & catalogs, plastic bottles (#1-#2), glass bottles (clear, green, brown), and metal cans. These mandated recyclables can be commingled in the same bin along with other non-mandated recyclable items that your hauler offers to collect. Contact your hauler or local drop-off for disposal of food scraps and leaf & yard waste. Food scraps, leaf & yard waste, and clean wood are all accepted at the District Transfer Station.

**Loads must be properly sorted.** We reserve the right to inspect & reject or surcharge improperly sorted loads.

**All visitors must check in at the Scalehouse. Thank you!**



“News to Reuse” is a publication of the Addison County Solid Waste Management District. Questions or comments? Visit our website, [www.AddisonCountyRecycles.org](http://www.AddisonCountyRecycles.org) or contact us at (802) 388-2333 or [info@acswmd.org](mailto:info@acswmd.org). This newsletter is printed on recycled paper.

# Postal Patron

- Addison
- Bridport
- Bristol
- Ripton
- Cornwall
- Salisbury
- Ferrisburgh
- Shoreham
- Goshen
- Starksboro
- Leicester
- Vergennes
- Lincoln
- Waltham
- Middlebury
- Weybridge
- Whiting
- Monkton
- New Haven

ACSWMD  
1223 Rte. 7 South  
Middlebury, VT 05753



STANDARD A  
US POSTAGE  
PAID  
Middlebury, VT  
Permit No. 70